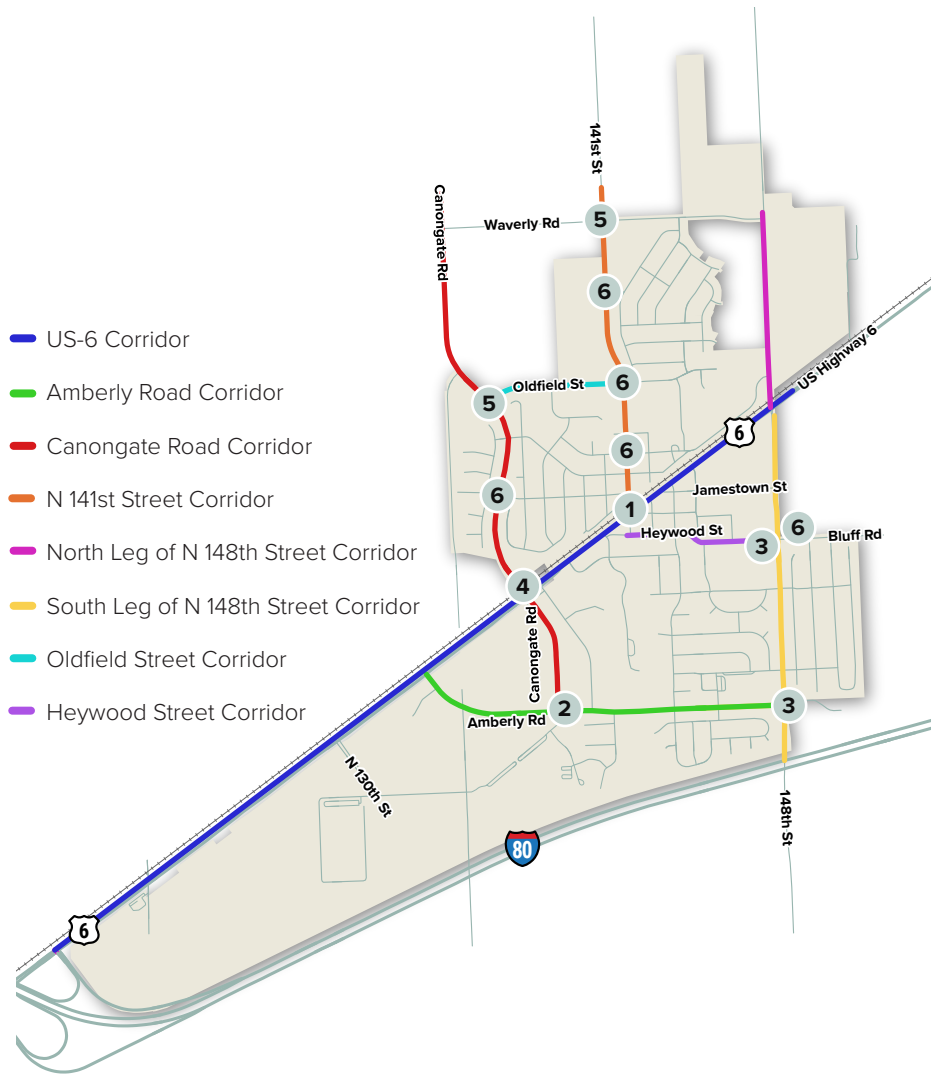


POTENTIAL PROJECTS

- 1 US-6 & N 141st Street Intersection
- 2 Amberly Road & Canongate Road Intersection
- 3 Possible Roundabouts Along N 148th Street
- 4 Canongate Road Bridge over US-6
- 5 Potential Roundabout Locations
- 6 Possible Rectangular Rapid Flashing Beacon (RRFB) Locations



ADVISORY TEAM

To ensure community values are represented throughout the development of the plan, an Advisory Team has been assembled by the City for this project. This team met frequently throughout the project’s lifespan where they discussed plan updates and progress.

Stephanie Fisher
City Administrator
City of Waverly

Abbey Pascoe
Mayor
City of Waverly

Tracey Whyman
Public Works Director
City of Waverly

Kris Bohac
Planning Commission Chair
City of Waverly

Ben Houchin
Chief Deputy Sheriff
Lancaster County

Robin Hoffman
Emergency Services Coordinator
City of Waverly

Cory Worrell
Superintendent
District 145



City of Waverly

Comprehensive Safety Action Plan



At the beginning of 2024, the City initiated the development of a Safe Streets for All (SS4A) Safety Action Plan for the community of Waverly, Nebraska. Since then, a draft plan has been developed that aims to eliminate fatal crashes and dramatically reduce serious injury crashes for all users of Waverly’s highway, street, sidewalk, and trail transportation network.

The outcome of this plan will provide an overview of the following:

- Historical crash data for the city of Waverly
- Development of applicable countermeasures
- Supporting effective transportation access and use solutions.
- Focused pedestrian/bicycle improvements

The city of Waverly’s Comprehensive Safety Action Plan aims to eliminate fatal crashes and dramatically reduce serious injury crashes for all users of Waverly’s highway, street, sidewalk, and trail transportation network.



For questions about this project, please contact **Stephanie Fisher** with the City of Waverly at **(402) 786-2312** or Project Manager **Pat Byrd** with JEO Consulting Group at **pbyrd@jeo.com**.

WHAT IS A SAFE STREETS FOR ALL (SS4A) - SAFETY ACTION PLAN?

The U.S. Department of Transportation (USDOT) established the Safe Street and Roads for All discretionary program in 2022 with \$5 billion appropriated over the next five years (2022-2026). The City of Waverly successfully obtained SS4A grant dollars in fall 2023 and officially kicked off the project in January 2024.

The SS4A program follows the Safe System Approach to achieve the goal of zero roadway deaths and reduce serious injury crashes in a community.

OBJECTIVES OF A SAFE SYSTEM APPROACH

The Safe System Approach Principles also complement five critical objectives that will be achieved through the adoption of Waverly’s Comprehensive Safety Action Plan:

Safer Vehicles

Expand Waverly’s availability of vehicle systems and features that help to prevent crashes and minimize the impact of crashes on both occupants and non-occupants.

Safer Speeds

Promote safer speeds on all Waverly streets through a combination of thoughtful, equitable, context-appropriate roadway design, appropriate speed-limit setting, targeted education, outreach campaigns, and enforcement.

Safer People

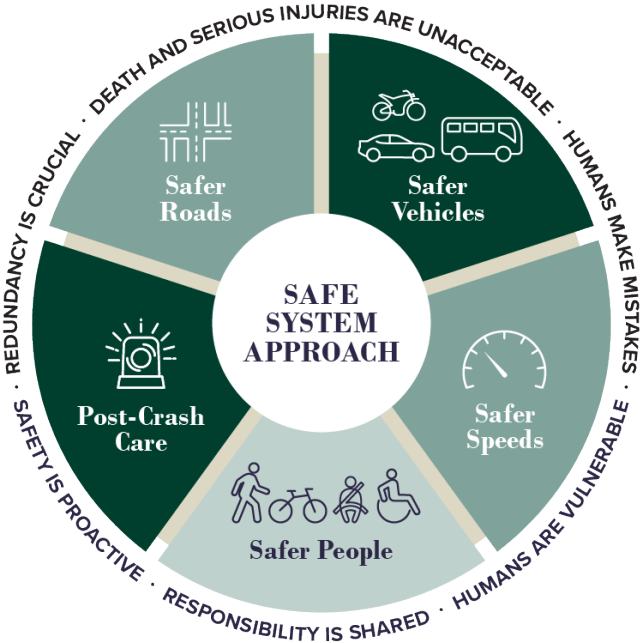
Encourage safe, responsible driving and behavior by people who use Waverly’s roads and create conditions that prioritize their ability to reach their destination unharmed.

Post-Crash Care

Enhance the survivability of crashes through expedient access to emergency medical care, while creating a safe working environment for vital first responders and preventing secondary crashes through robust traffic incident management practices.

Safer Roads

Design roadway environments in Waverly to mitigate human mistakes and account for injury tolerances, to encourage safer behaviors, and to facilitate safe travel by the most vulnerable users in the community.



THE NEED FOR SAFER STREETS

A total of 42,939 people died in motor vehicle crashes in 2021. These deaths occurred in 39,508 crashes involving 61,332 motor vehicles. This was a 10% increase in deaths compared with 2020, according to the Insurance Institute for Highway Safety (IIHS) and the Highway Loss Data Institute (HLDI).

Traffic crashes continue to be a leading cause of death for teenagers in America, and impact people who live in low income and rural communities at a higher rate than those who do not.

39,508 Crashes

42,939 Deaths

10% Increase in Deaths

Data from 2021. Insurance Institute for Highway Safety (IIHS) and the Highway Loss Data Institute (HLDI)

PROJECT PRIORITIZATION

The next step of the planning process was to prioritize safety improvement projects based on the following data sets:

- 1

Fatal & Injury Crashes

Proposed project impact on previous fatal vehicle crashes and severe injury vehicle crashes.
- 2

Total Ped/Bike Crashes

Number of crashes involving pedestrians and bicyclists with motor vehicles that include fatal and severe injuries.
- 3

Public Input

Location of the proposed project in relation to identified locations where socially vulnerable communities are located.
- 4

Multimodal

Proximity of the proposed project location to existing trail networks.

FINAL SAFETY ACTION PLAN RECOMMENDATIONS

When evaluating the safety issues identified in Waverly, the City considered the above criteria for each location. This led to an initial scoring and ranking of several safety issues across the City.

From this initial screening, a list of prioritized projects were identified for street segments and intersections.

Additionally, safety countermeasures recommended by the U.S. Department of Transportation Federal Highway Association (FHWA) were also considered during the development of the Waverly Comprehensive Safety Action Plan. Each countermeasure addresses at least one safety focus area – speed management, intersections, roadway departures, or pedestrians/bicyclists – while others are crosscutting strategies that address multiple safety focus areas.

Beyond built projects, potential partnerships, programs, and policies were also considered to further improve safety conditions in the community.

